



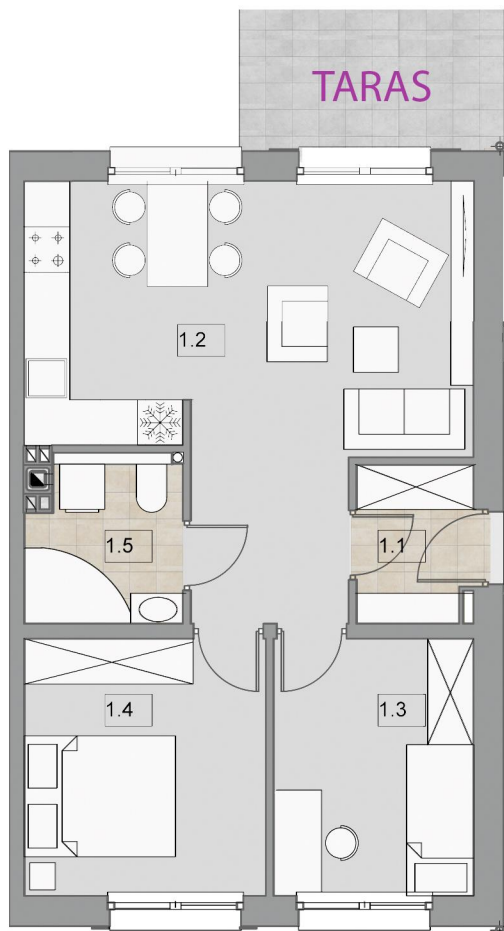
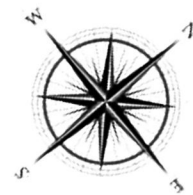
JAŚMINOWA ALEJA

MIESZKANIE -PARTER,
POW. UŻYTKOWA: 53,35M²
KOMÓRKA LOKATORSKA: 3,16M²
POW. OGRODU 106M²

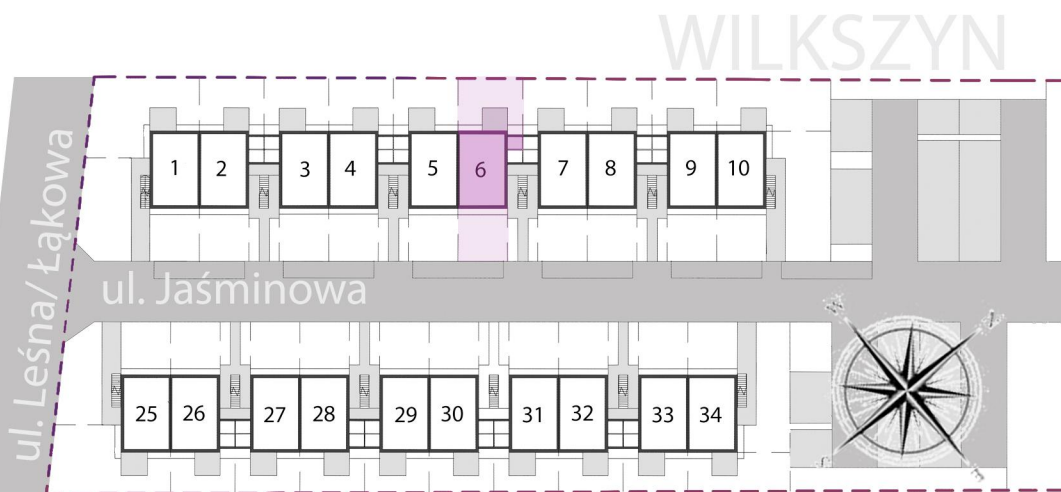
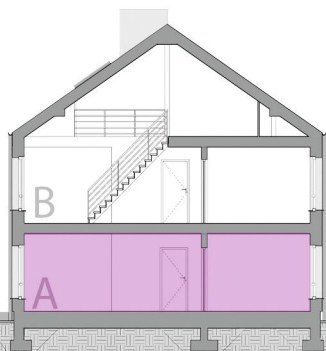
J6A



1CM= 1M



| | | |
|---------------|-------------------------------|---------------------------|
| 1.1 | WIATROLAP | 3,16M ² |
| 1.2 | SALON Z KUCHNIĄ I JADALNIĄ | 25,88M ² |
| 1.3 | POKÓJ | 9,00 M ² |
| 1.4 | SYPIALNIA | 10,87M ² |
| 1.5 | ŁAZIENKA | 4,44 M ² |
| RAZEM: | | 53,35M² |



TEL. 607 608 259
(71) 317 72 87

E-MAIL: INFO@EKDOM.PL

WWW: WWW.EKDOM.PL